

NordicSOFA

module system



Fjords®
furniture of Norway

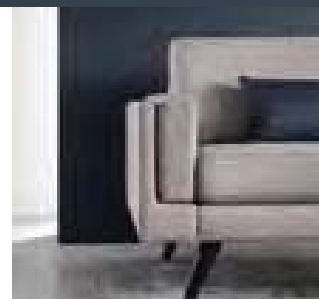


Nordic inspired modular concept with stunning design and seating comfort

Improve your living

NordicSOFA module system

Available in all of Hjellegjerde's fabric and leather options.



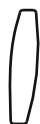
- Moulded cold foam in seat.
- Back rest cushions block molded cold foam.
- Seat and back cushions in fabric are reversible.
- Frame in plywood and details in solid wood.

Choose from multiple arm options



ARM 11

B: 17 cm
H: 40 cm



ARM 12

B: 12 cm
H: 48 cm



ARM 13

B: 11 cm
H: 42 cm



ARM 14

B: 11 cm
H: 42 cm

Choose back and seat cushions. for 3 and 3.5 seat width options.



3 pillows STANDARD for 3 and 3.5 seats.



2 pillows DUO for 2, 3 and 3.5 seats.

On 3 and 3.5 seats you can choose the number of back and seat cushions- 3 pillows or 2 larger cushions, called duo.

Choose from different fabrics and leathers.

Choose among a variety of modern fabrics and leather in contemporary colors.



More possibilities

- NordicSOFA Headrest, adjustable.
- NordicSOFA Arms 11 through 14.
- NordicSOFA Cushion, in 3 sizes.
- NordicSOFA Magazine / Media pocket.

Leg Style Options



NORDIC ANGLED
Wood - H: 20cm



NORDIC STRAIGHT
Wood - H: 20cm



NORDIC PIN
Metal - H: 20cm

Wood Color Options

1. WALNUT



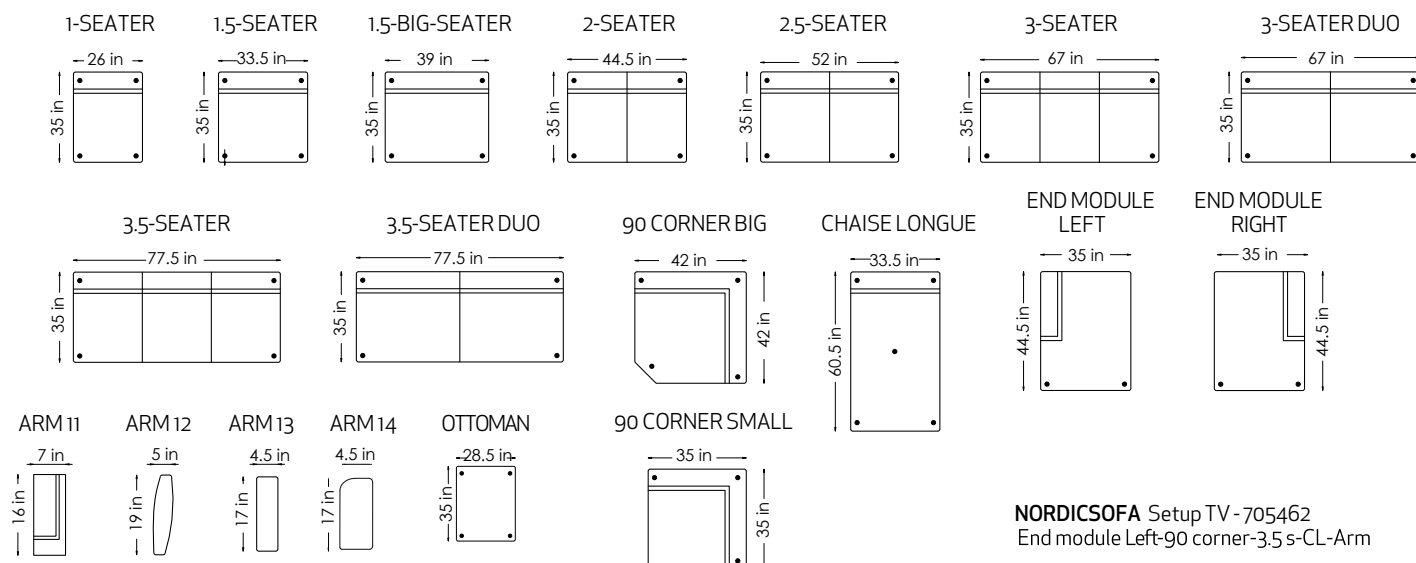
2. ESPRESSO



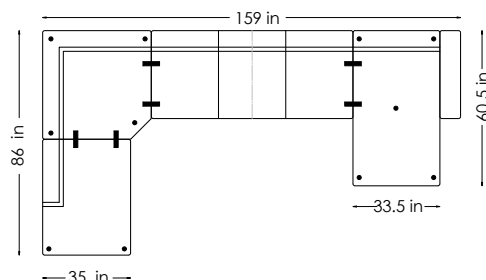
Build your own sofa

Choose the modules that fit your personal needs.

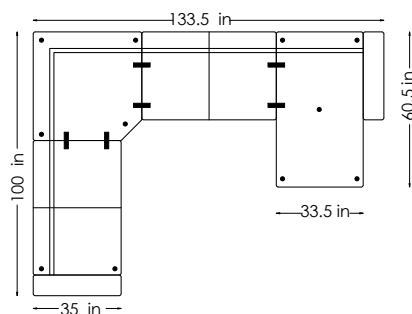
Modules / options - Standard modules for both large and small arrangements



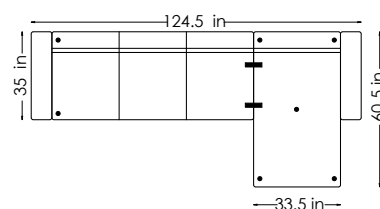
NORDICSOFA Setup TV - 705462
End module Left-90 corner-3.5 s-CL-Arm



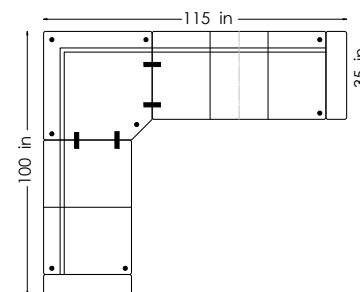
NORDICSOFA Setup B - 705449
Arm-2.5 s-90 corner-2.5 s-CL-Arm Reversible



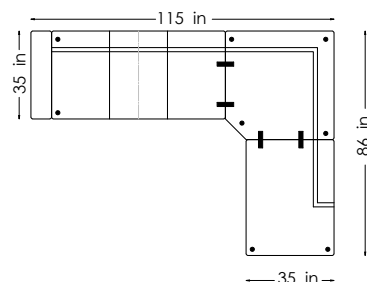
NORDICSOFA Setup E - 705432
Arm-3.5 s-CL-Arm Reversible



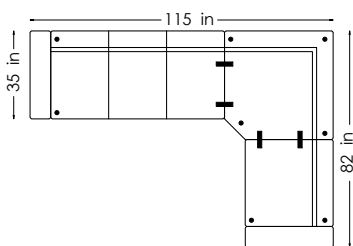
NORDICSOFA Setup F - 705412
Arm-2.5 s-90 corner-3 s-Arm Reversible



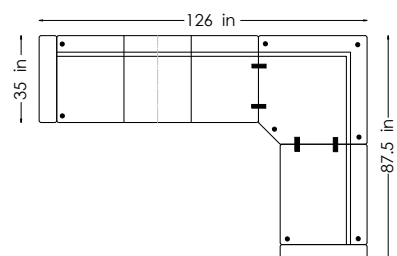
NORDICSOFA Setup RH - 705438
Arm-3 s-90 corner-end module Right



NORDICSOFA Setup H - 705467
Arm-3 s-90 corner-1.5 s-Arm Reversible



NORDICSOFA Setup L - 7050470
Arm-3.5 s-90 corner-1.5 Big s-Arm Reversible



Depth: 35 in
Height: 33 in
Seat height: 18.5 in
Seat depth: 22 in

All measurements are listed with Arm 11 at 7 in.

Total size may vary by +/-1.5 in depending on the thickness of the fabric / leather.

NordicSOFA

module system

by Fjords®



[A45] www.A45.no



Fjords USA Inc.

1200 County Road 523

Flemington, NJ 08822

Phone: 908-788-0881

Email: usa@hjellegjerde.com

www.hjellegjerde.com